



*The Renaissance  
of Marriage*

[www.pmrc.org.au](http://www.pmrc.org.au)

# Gender Collide

*When two  
worlds meet*

# Gender differences



**Men and women are different!**

# Science of Relationship

## Stages

- **Attraction**
- **Infatuation**
- **Bonding**
- **Parenting**



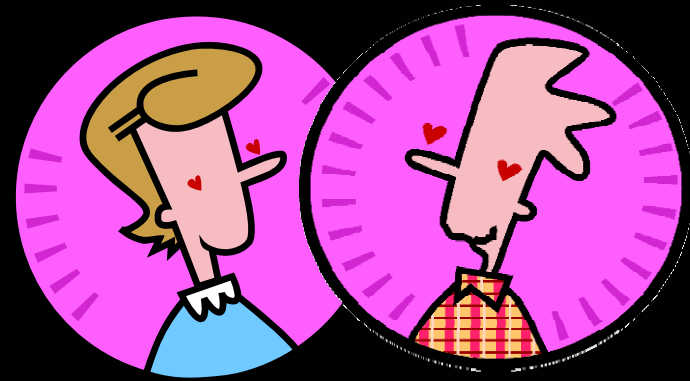
# Attraction

- Immunologically dissimilar  
eg man smell study
- Pheronomes



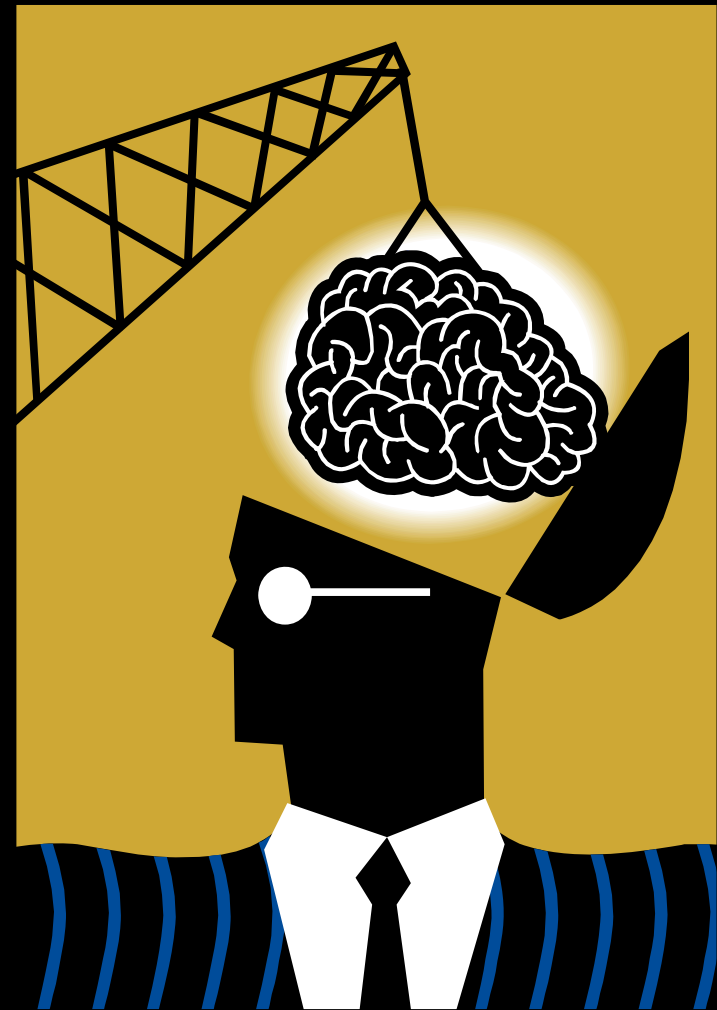
# Infatuation

- **Brain chemistry**
    - **Noradrenaline**  
inc. energy, dec. sleep,  
dec. appetite
    - **PEA (phenylethylamine)**  
inc. risk taking
    - **Dopamine**  
addiction pathways
- euphoria, altered state of consciousness



# Infatuation

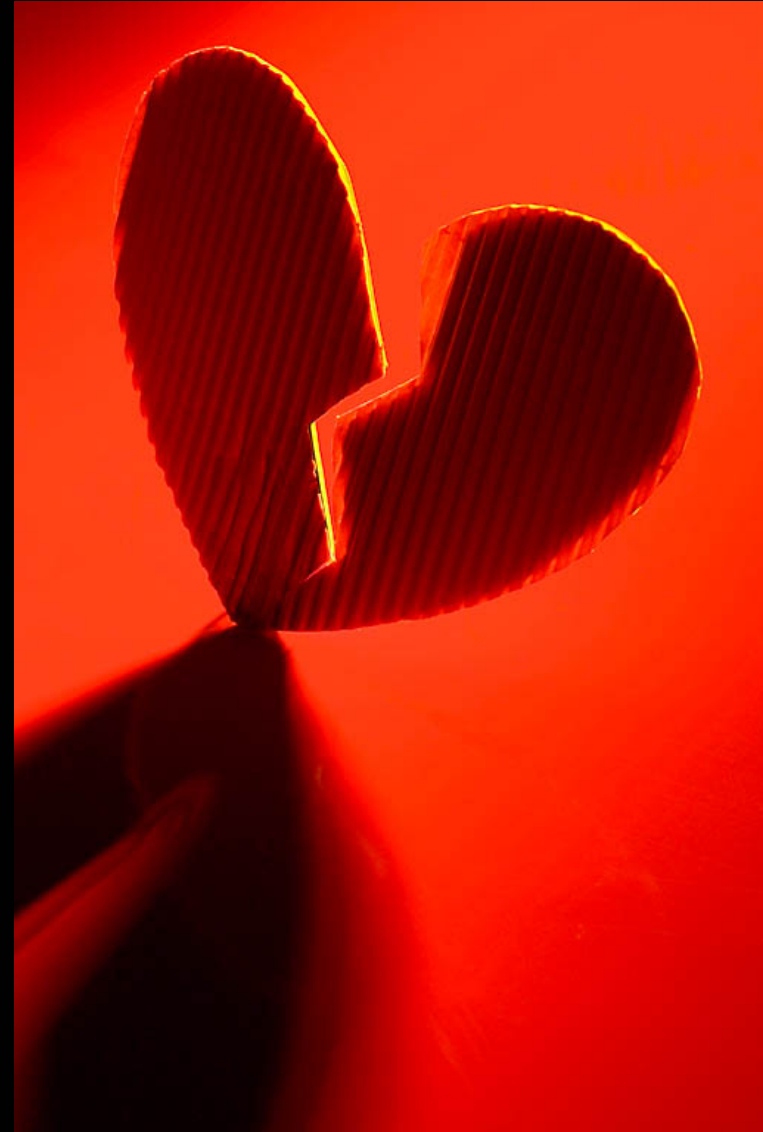
- **Brain blood flow**  
Eg college student study



# Infatuation

## Addiction characteristics

- Cravings, withdrawal symptoms
- Desensitization
- Accommodation
- 6-18months



# Bonding

Oxytocin

= 'the bonding hormone'



# Bonding



**Oxytocin**

- **Labour  
(contractions)**

# Bonding

## Oxytocin

- Breast feeding  
(let down reflex)



A close-up photograph of a man and a woman kissing. The man is on the left, wearing a white bucket hat and sunglasses, leaning towards the woman on the right. They are outdoors, with a body of water and a blurred background. The text 'Bonding' is overlaid in the top right corner.

# **Bonding**

**Oxytocin**

- **orgasm**

# Bonding

## Oxytocin

- Labour (contractions)
- Breast feeding (let down reflex)
- Orgasm

# Parenting

- **Civilising influence (esp. on men)**
- **Impact of children on happiness**

# Positive Psychology

## 3 areas of study:

- Positive experience (happiness)
- Positive character strengths (virtues)
- Positive institutions (empowering, enabling)

# Positive Experience

## Happiness – 3 types:

1. Hedonistic happiness
2. Engaged (flow)
3. Service to others

# Positive Character Strengths

**Virtues – 6 categories**

- 1. Wisdom**
- 2. Courage**
- 3. etc**



# Positive Institutions

- **Empowering, Enabling**

# Chemistry of Relationship

**What's it all mean?**

- 1. Biological imperative to reproduce → it's all a trick of nature**
- 2. Divine plan is revealed in and through creation.**



# Gender differences

	<b>Man</b> <b>Active Initiation</b>	<b>Woman</b> <b>Active Receptivity</b>
<b>Sex</b>	<b>Penetration</b>	<b>Reception</b>
<b>Parenting</b>	<b>Pushes away</b>	<b>Draws close</b>
<b>Morality</b>	<b>Strength vs weakness</b>	<b>Beauty vs Ugliness</b>
<b>Survival Strategy</b>	<b>Fight or Flight</b>	<b>Tend &amp; Befriend</b>
<b>Relational Emphasis</b>	<b>Protective</b>	<b>Nurturing</b>

# Shadow side

## Psychic terrors (primal fears)

**Men:** Shame vulnerability  
(fear of failure, impotency)

**Women:** Abandonment anxiety  
(fear of aloneness, harm)

# Reactions to fear

- **Woman's fear of abandonment**  
→ control (anger)
- **Man's fear of inadequacy**  
→ irresponsibility (apathy)
- **Anger/apathy** is the response to emotional threat... and becomes habitual behaviour (self protecting)

# illuminating the shadow

## Women's particular disability and man's particular responsibility

- Women's receptivity becomes burden & liability, not gift
- Man is to called to be the *guardian* of her receptivity

# illuminating the shadow

**Man's particular disability and  
woman's particular responsibility**

- **Man's *initiative* becomes burden & liability, not gift**
- **Woman is called to be the *enabler* of his initiative**



# Fear is the antithesis of love

A silhouette of a cross is positioned on the right side of the image, set against a dramatic sky at sunset or sunrise. The sky is filled with soft, scattered clouds in shades of blue, orange, and yellow, with the sun's glow visible near the horizon.

***There is no fear in love.  
But perfect love drives out fear,  
because fear has to do with  
punishment.***

***The one who fears is not made  
perfect in love***

**1 John  
4:17-19**